



PTV1001

Product Brief



'02
New

MPEG-2 Transport Stream Analyzer, Generator & Recorder

PrimeDTV PTV1001 is a low-cost and rich-feature MPEG-2 Real-time Transport Stream Analyzer, Generator and Recorder designed specifically for the rapidly growing DTV environment.

Product Applications:

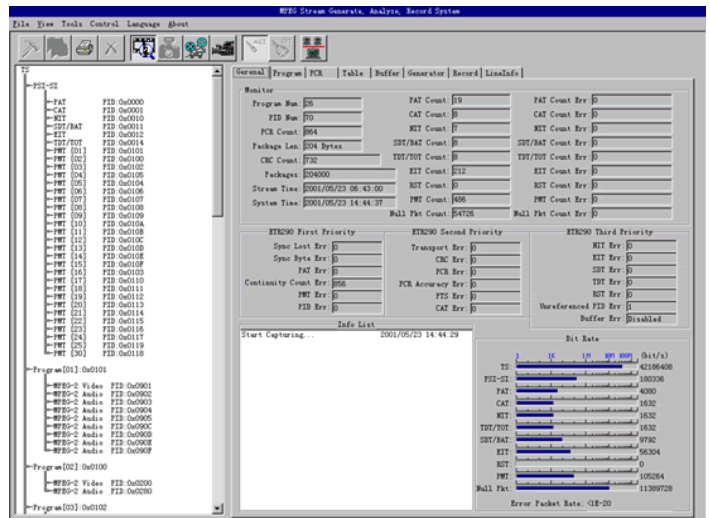
- ◆ Development
- ◆ Production
- ◆ Transmission
- ◆ Terrestrial
- ◆ Cable
- ◆ Satellite
- ◆ Field Analyzing

Product Package:

- ◆ Portable (with color LCD and keyboard)
- ◆ ATSC/QAM capture PCI card (Option)
- ◆ Network Access (Option)
- ◆ DVD/CD Writer for additional TS data storage (Option)

Product Overview:

PTV1001 gives in-depth real-time or off-line analysis of all elements of the MPEG-2 transport stream including stream syntax verification, content conformation, timing and buffer use analysis, error capture, etc. It displays transport streams in an easy-to-read tree structure and shows analysis and monitoring results with graphical displays. The equipment also generates standard transport streams from files, built-in debug stream and input stream with add-on features like user-controlled output bit rates, automatic SPI/ASI conversion and ASI mode selection. The recording function records real-time input stream to your local hard disk for future replay or detailed off-line analysis. The unit can also automatically capture error-triggered transport stream through user settings. The auto-generated log file saves the analyzed transport stream information list and result.





PTV1001

Product Brief



Features and Functions:

- ◆ TS input/output:
 - SPI and ASI interfaces
 - 120Mbps max bit rate
 - SPI/ASI conversion
 - ASI output mode selection (burst, smooth, equal interval)
 - Output bit rate control
- ◆ Real time analysis:
 - Analysis delay <100ms
 - Stream content and PSI/SI displayed in tree structures
 - Main parameter analysis and statistics
 - PCR clock monitoring, jitter and interval analysis
 - Program & Elementary Stream parameters
 - PSI/SI tables & descriptors
 - Error checking based on ETR290. All three level errors are checked and analyzed
- ◆ Stream capturing:
 - Capture length depends on system memory size
 - Off-line analysis can be activated after capture
 - Filtering modes can be selected
 - Error triggered automatic capturing can be preset
- ◆ Transport Stream Recording:
 - Recording length is only limited by disk size
 - Recording length and filtering mode can be selected
- ◆ Transport Stream Generating:
 - Source: transport stream files, direct from input stream, buffered and modified input stream, build-in debug stream
 - Step size of generating clock frequency less than 1Hz, accuracy of internal clock 10^{-7}
 - Controllable output bit rate, SPI/ASI conversion, ASI modes, etc.
- ◆ Line signal analysis & monitor:
 - ASI/SPI input error and status check and monitor
- ◆ Off-line analysis:
 - Tree structure display
 - Colorized packet content analysis
 - Packet head
 - PSI/SI tables
 - PES headers
 - MPEG video and audio parameters
 - PCR jitter and interval
 - And more

